



GMT MONTHLY MEMBERSHIP PROGRESS REPORT

Results as of: 2/29/2020

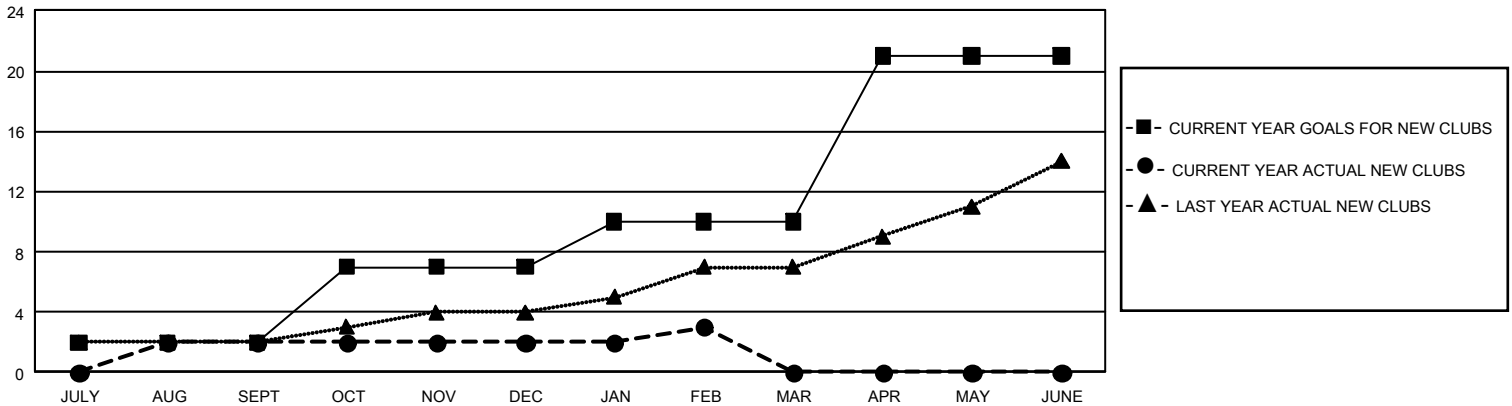
GMT Constitutional Area 4, Group B

GMT: OPEN

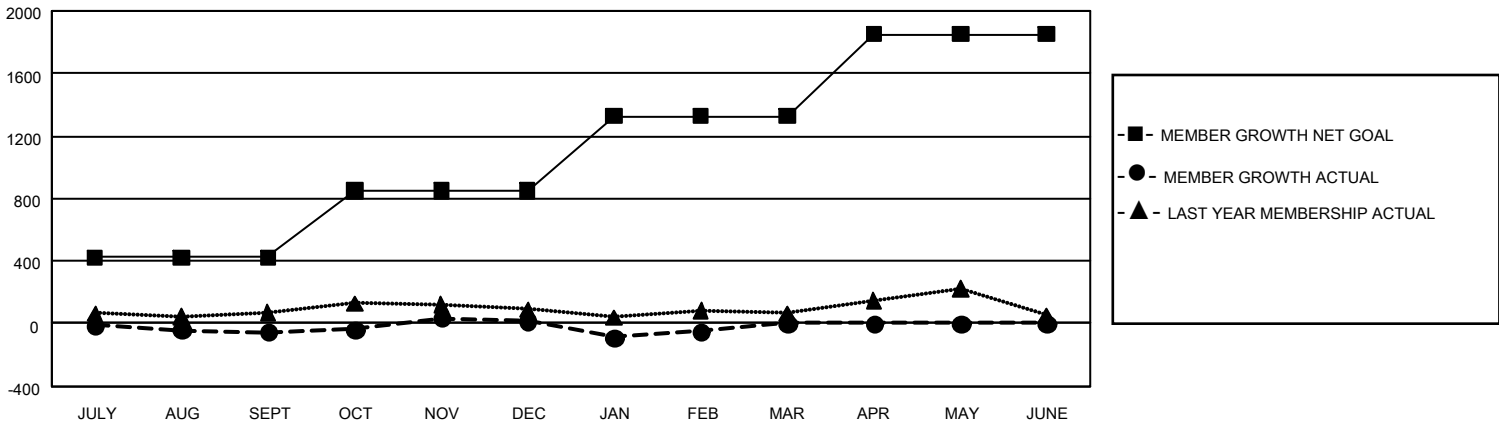
REPORT DOES NOT INCLUDE CLUBS IN UNDISTRICTED AREAS.

Clubs				Members			
RESULTS FOR 2019-2020				RESULTS FOR 2019-2020			
QUARTER	NEW CLUB GOAL	NEW CLUBS	DROPPED CLUBS	QUARTER	MEMBER GROWTH NET GOAL	MEMBER GROWTH ACTUAL	DROPPED MEMBERS ACTUAL (including transfers)
JULY/AUG/SEPT	6	2	1	JULY/AUG/SEPT	1,272	733	723
OCT/NOV/DEC	15	0	1	OCT/NOV/DEC	1,284	654	535
JAN/FEB/MAR	9	1	1	JAN/FEB/MAR	1,425	599	617
APR/MAY/JUNE	33	0	0	APR/MAY/JUNE	1,575	0	0

GOALS AND ACTUAL NEW CLUBS CUMULATIVE



GOALS AND ACTUAL MEMBERS CUMULATIVE



DROPPED CLUBS: 3	1,015 CLUBS OF 2,107 ADDED 1 OR MORE NEW MEMBERS	GENDER DISTRIBUTION
DROPPED MEMBERS	CLICK HERE FOR CUMULATIVE MEMBERSHIP DATA	MALE 60,778 (84.77%)
DECEASED 481		FEMALE 10,923 (15.23%)
CLUB CANCELLED 43		TOTAL FAMILY UNIT MEMBERS 846
OTHER 1,349		FAMILY MEMBERS PAYING HALF DUES 405
TOTAL 1,873		